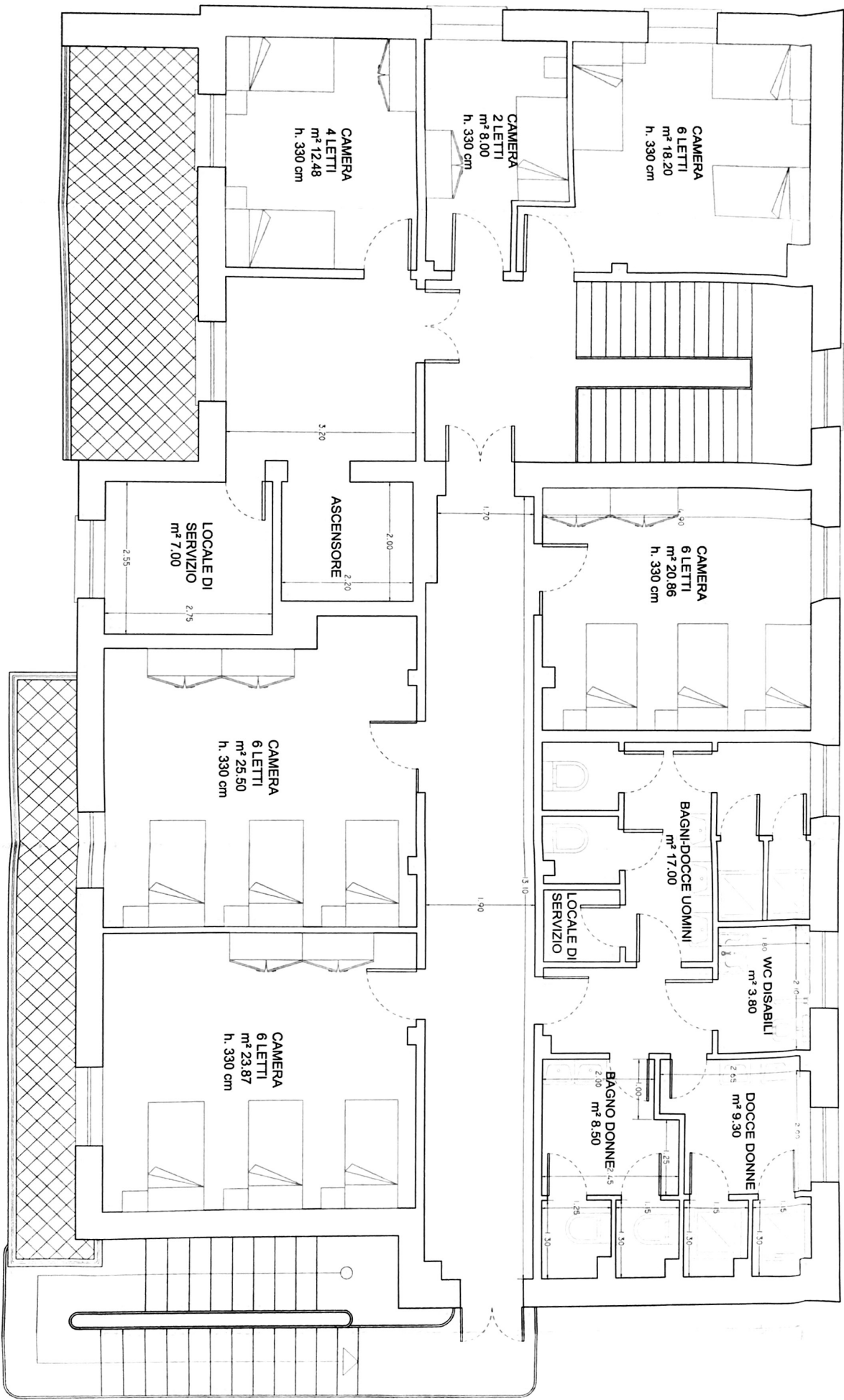
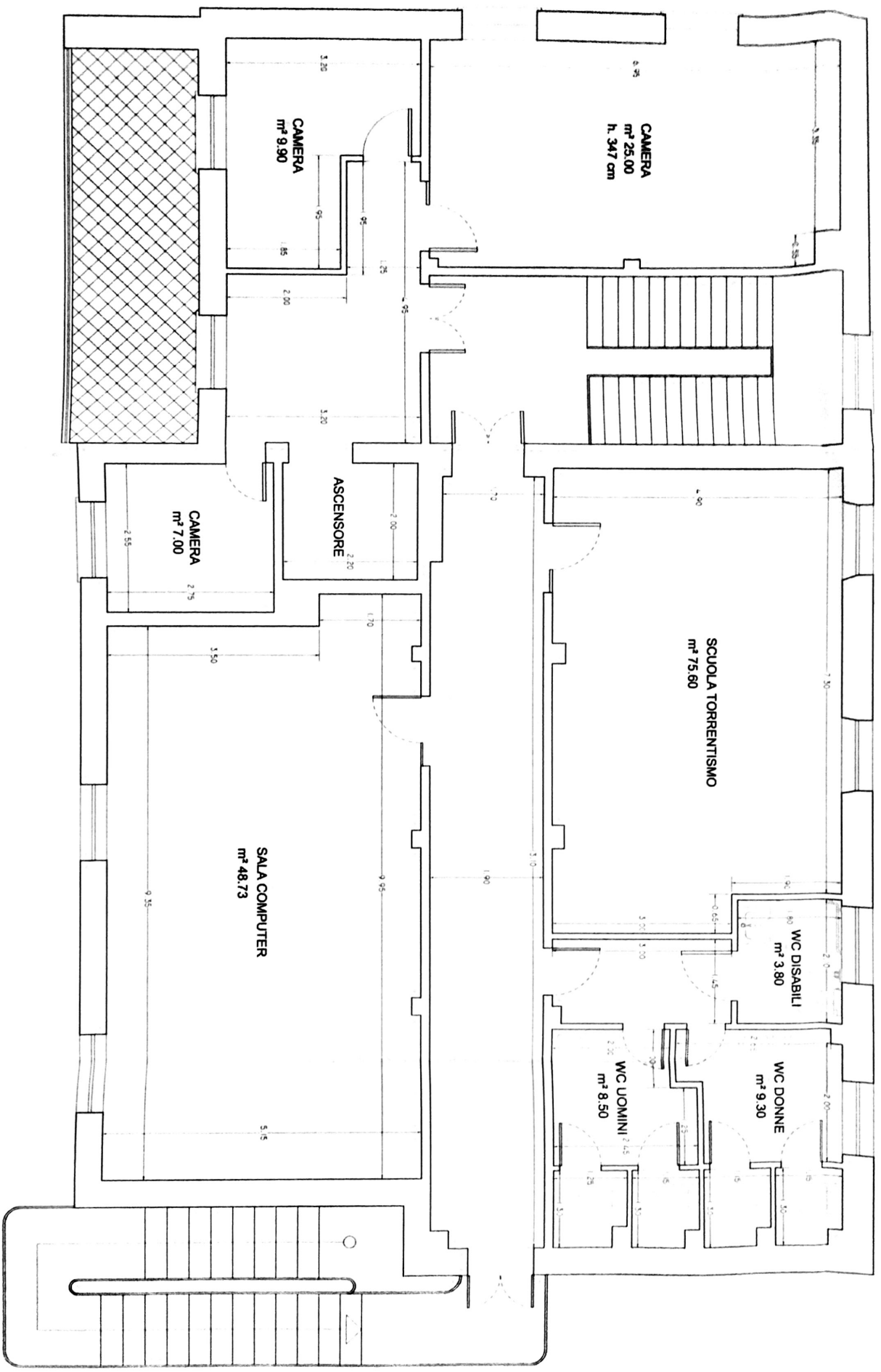


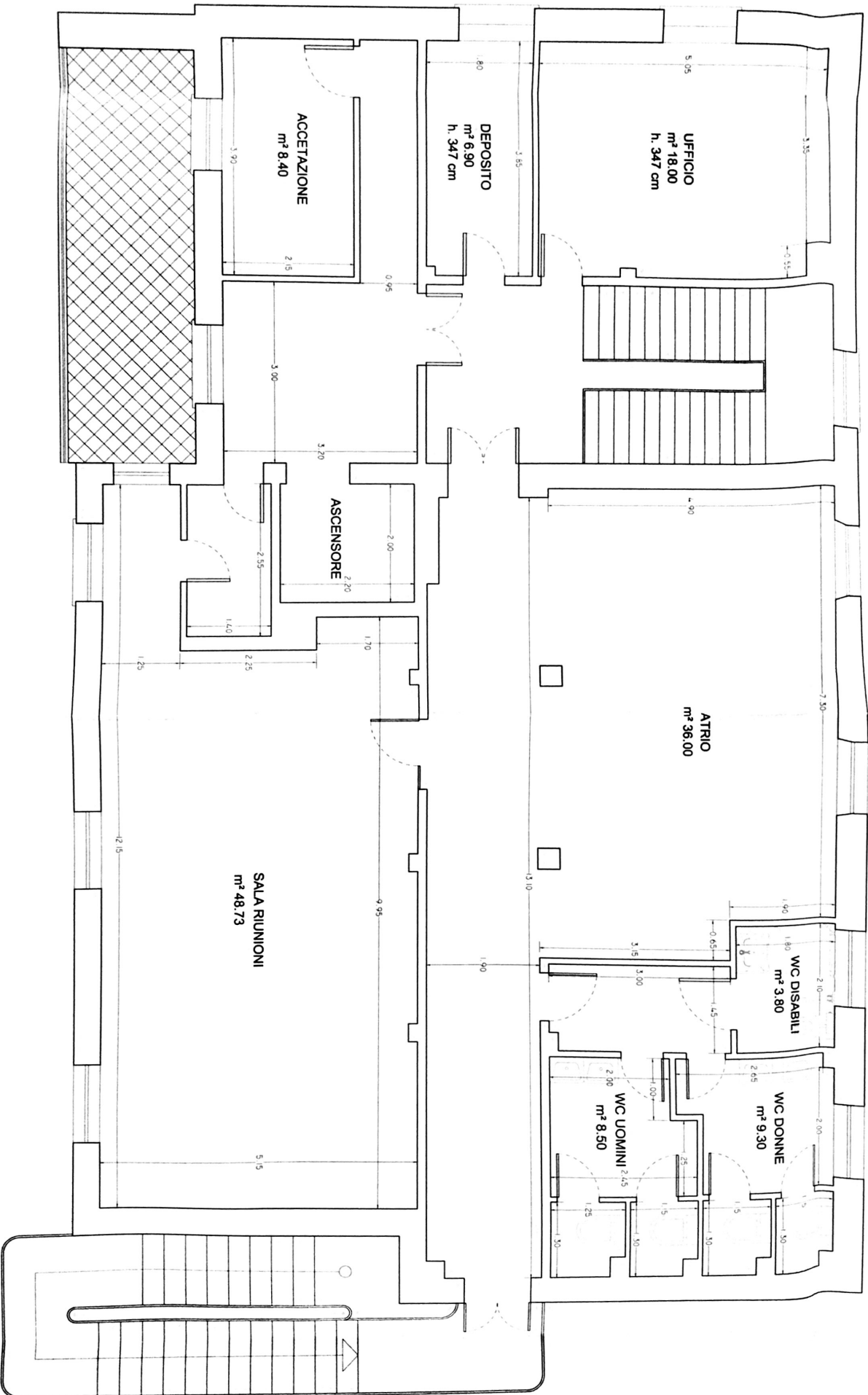
PIANTA PIANO TERZO
SCALA 1:50



PIANTA PIANO SECONDO
SCALA 1:50

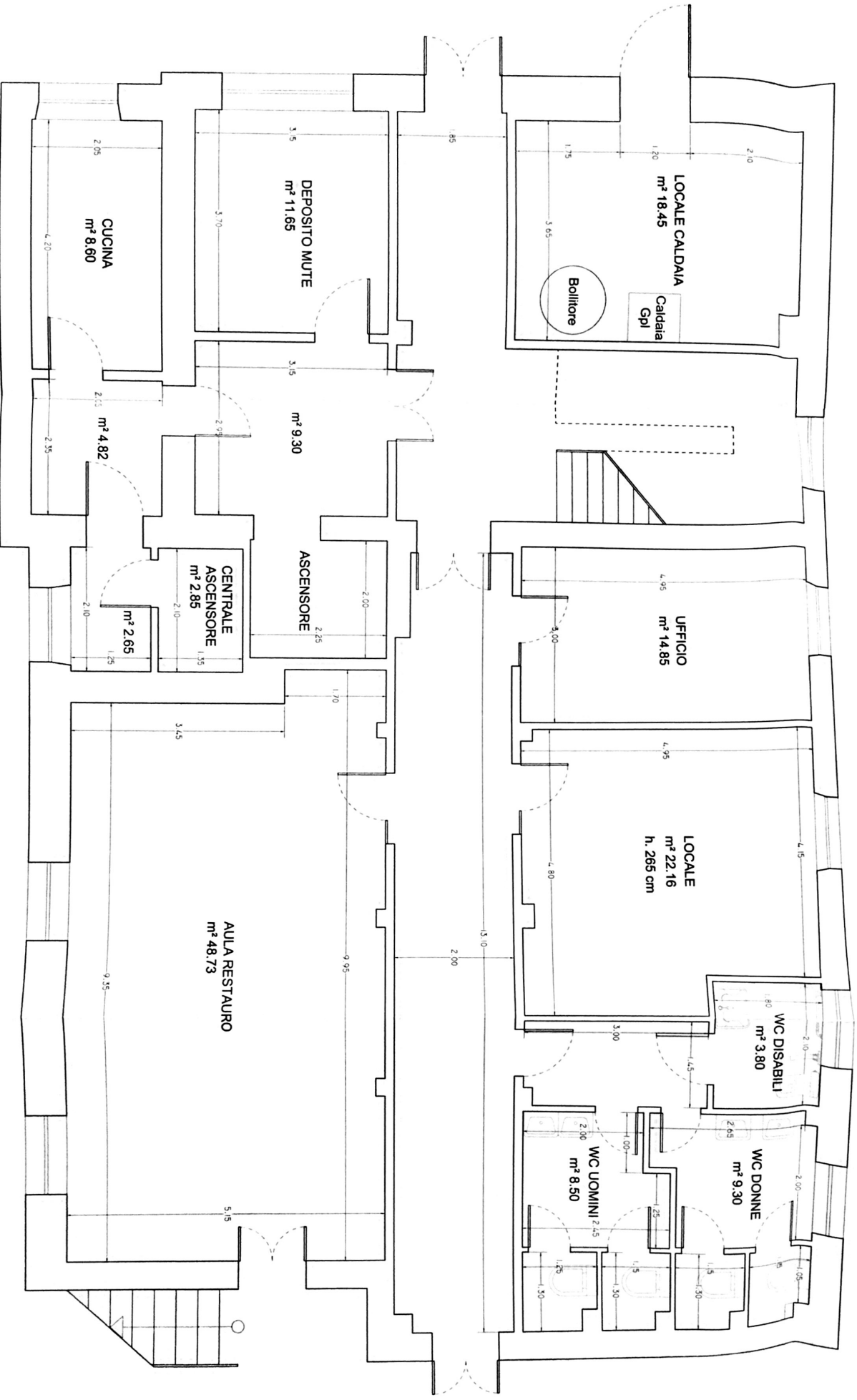


PIANTA PIANO PRIMO
SCALA 1:50

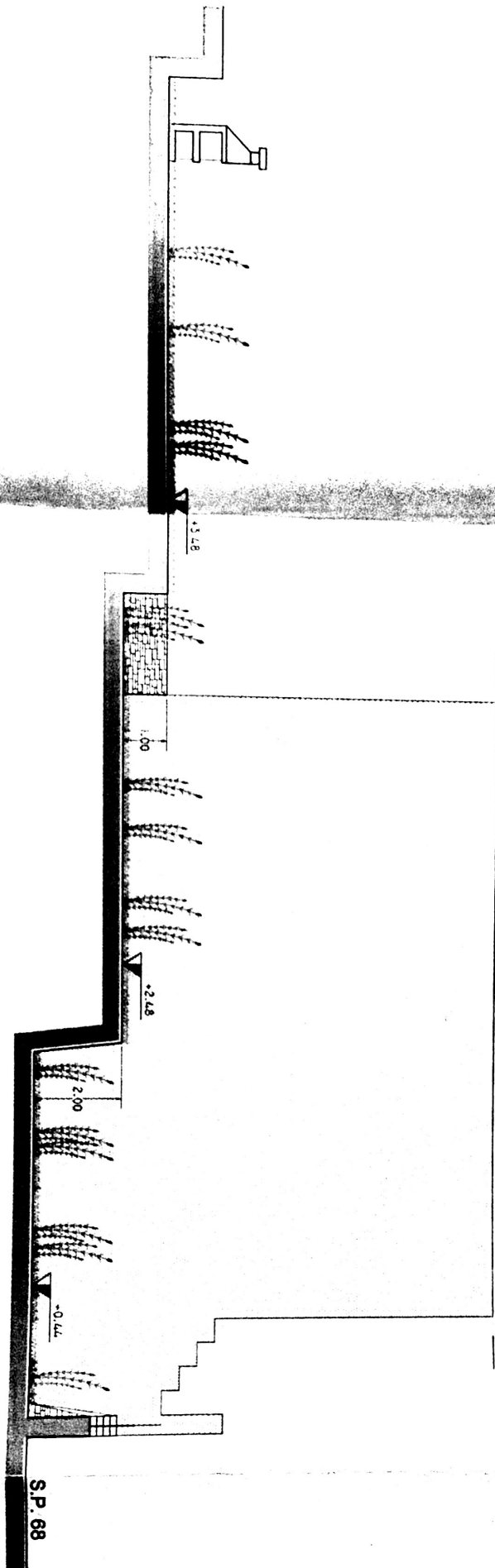


PIANTA PIANO SEMINTERRATO

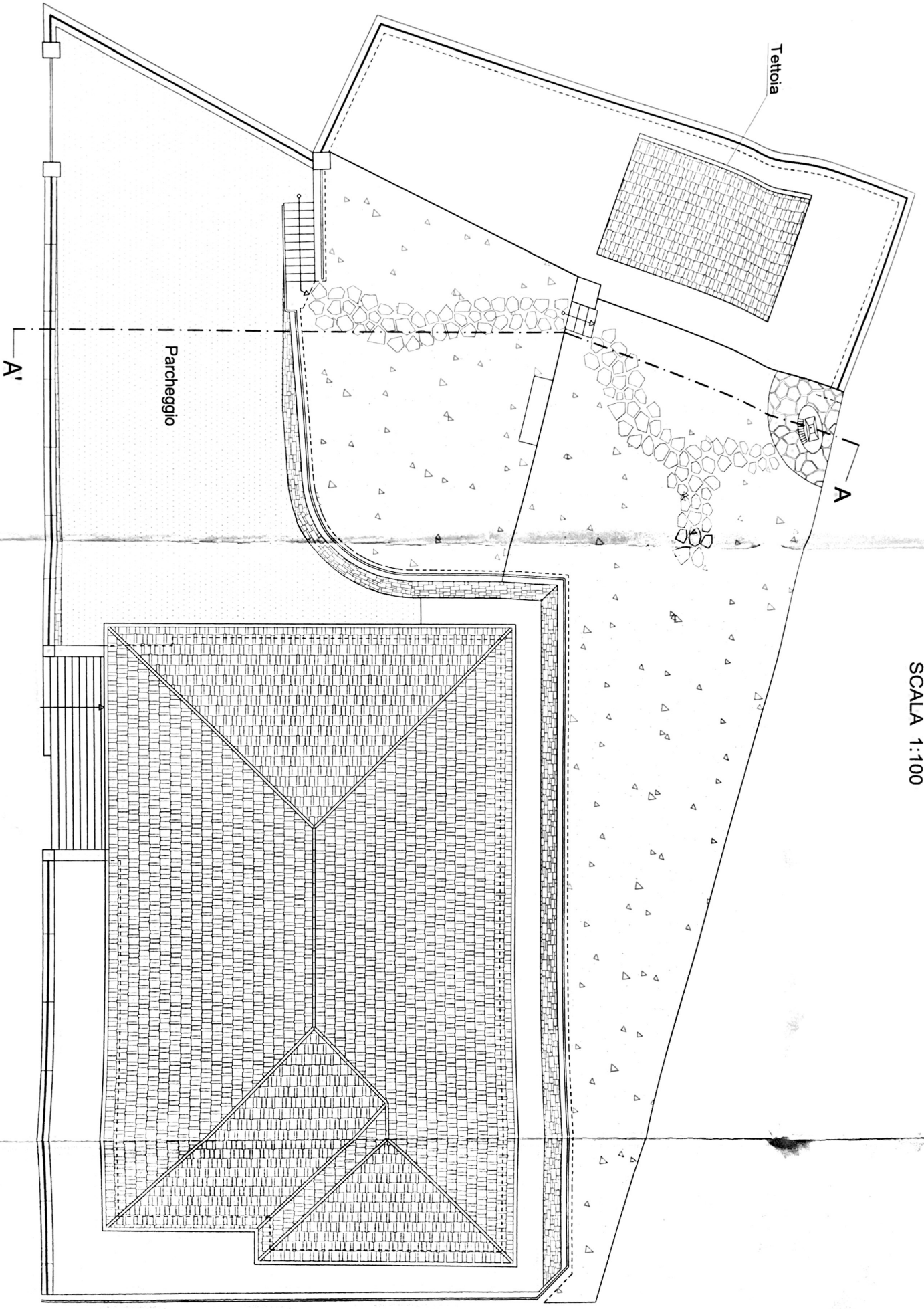
SCALA 1:50



SEZIONE A-A'
SCALA 1:100



PLANIMETRIA GENERALE
SCALA 1:100



COMUNE DI
ROCCHETTA NERVINA

PROVINCIA DI IMPERIA

Tav.02

PROGETTO : INTERVENTI DI ADEGUAMENTO
FUNZIONALE E RISPARMIO
ENERGETICO PER IL CENTRO DI
EDUCAZIONE AMBIENTALE
"OSTELLO ALPI LIGURI"

PROGETTO ESECUTIVO

OGGETTO : SITUAZIONE ESISTENTE

Data : Dolceacqua, li 10/11/2011

Studio Tecnico
Ingegnere Claudio PERRINO
Via Roma , n° 11/4 - 18035 Dolceacqua (IM)
tel. 0184/206428 - cell. 335/5314230
claudio.perrino@fastwebnet.it

IL R.U.P.